

CARADIOLOGY BREAKTHROUGH

Here is where your presentation begins

01

OBJECTIVES

Here you could describe the topic of the section

02

METHODOLOGY

Here you could describe the topic of the section

03

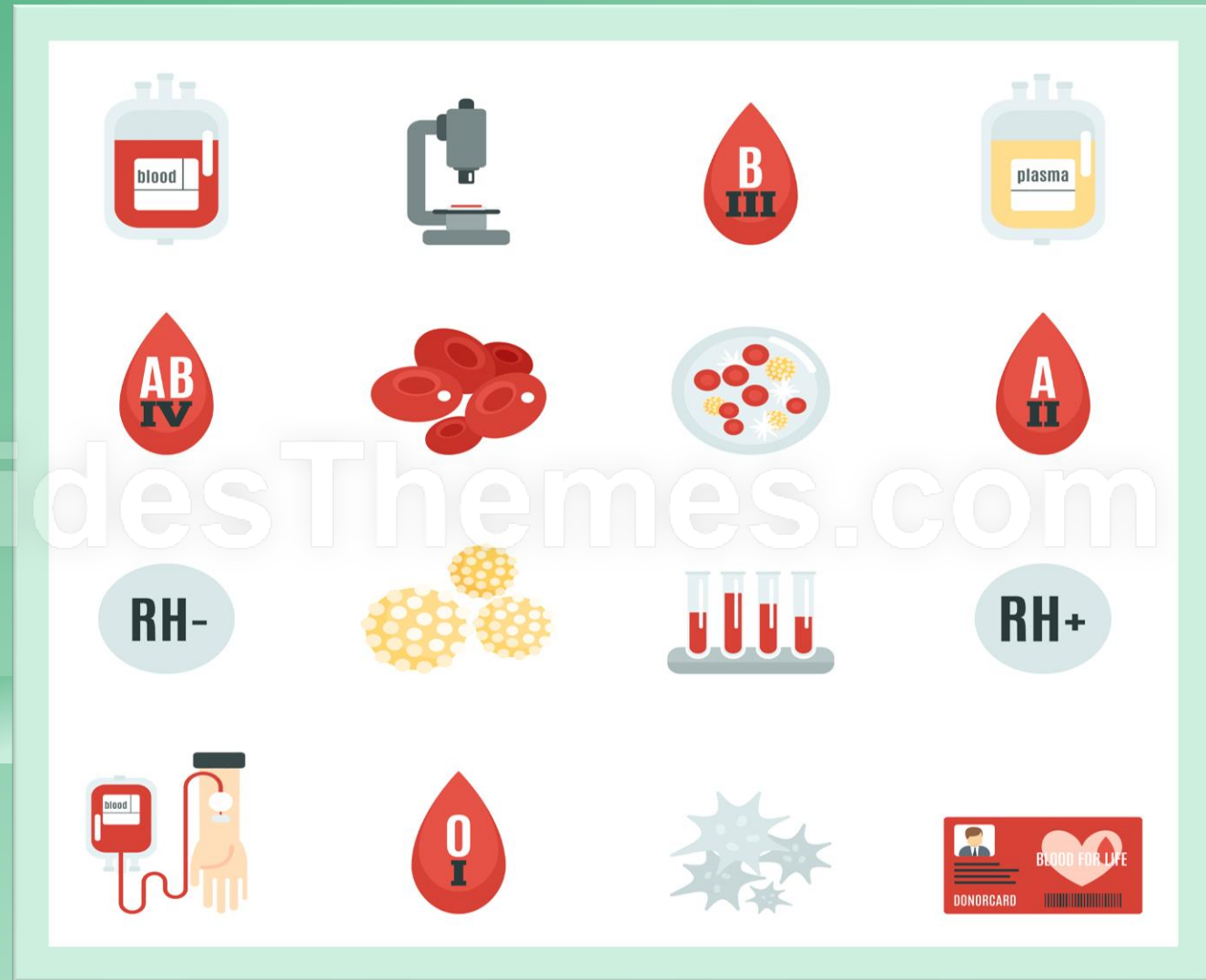
RESULTS ANALYSIS

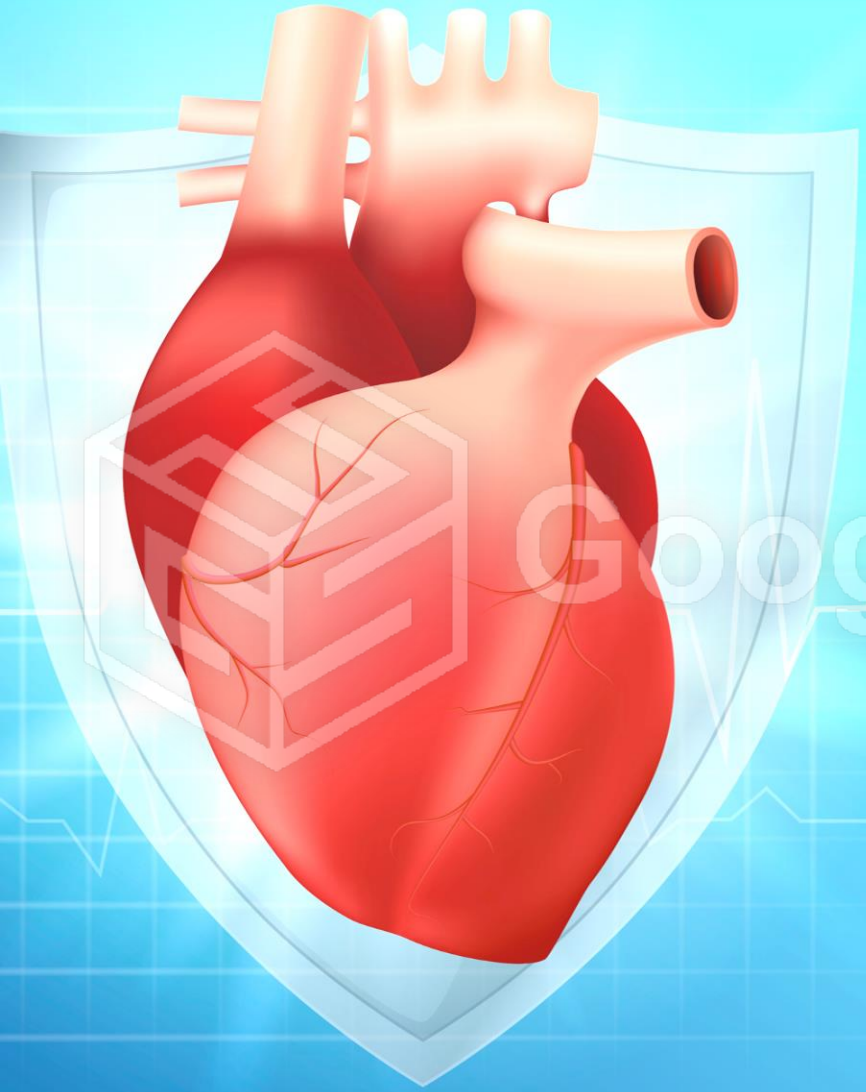
Here you could describe the topic of the section

04

CONCLUSIONS

Here you could describe the topic of the section





INTRODUCTION

Mercury is the closest planet to the Sun and the smallest one in the Solar System—it's only a bit larger than our Moon. The planet's name has nothing to do with the liquid metal since it was named after the Roman messenger god, Mercury



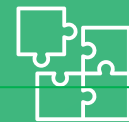
SATURN

Saturn is composed mostly of hydrogen and helium



MARS

Despite being red, Mars is a cold place, not hot. It's full of iron oxide dust



VENUS

Venus has a beautiful name, but it's terribly hot, even hotter than Mercury

JUPITER

Jupiter is a gas giant and the biggest planet in our Solar System

GoogleSlidesThemes.com

GOALS



MERCURY

Mercury is the closest planet to the Sun and the smallest one in the Solar System—it's only a bit larger than our Moon



VENUS

Venus has a beautiful name and is the second planet from the Sun. It's terribly hot and its atmosphere is poisonous



MARS

Despite being red, Mars is a cold place, not hot. It's full of iron oxide dust, which gives the planet its reddish cast

METHODS

MERCURY

Mercury is the closest planet to the Sun



VENUS

Venus has a beautiful name, but it's terribly hot



JUPITER

It's the biggest planet in our Solar System



SATURN

It's composed mostly of hydrogen and helium



Google Slides Themes.com

CLINICAL TRIAL

PRECLINICAL

Lab Studies



PHASE 1

Human Safety



PHASE 2

Expanded Safety



PHASE 3

Efficacy & Safety



RESEARCH AND PUBLICATIONS



“the second planet from the Sun. It’s terribly hot and its atmosphere is extremely poisonous”

by VENUS



the Sun and the smallest one in the Solar System—it’s only a bit larger than our Moon”

by MERCURY



mostly of hydrogen and helium. It’s over 95 times more massive than the Earth”

by SATURN

GoogleSlidesThemes.com

REFERENCE

- Here you can list your reference websites
- Here you can list your reference websites
- Here you can list your reference websites
- Here you can list your reference websites
- Here you can list your reference websites
- Here you can list your reference websites
- Here you can list your reference websites

GoogleSlidesThemes.com

FACTORS TO CONSIDER

Venus has a beautiful name, but
it's terribly hot



VENUS

Mercury is the closest planet
to the Sun



MERCURY

It's a gas giant and the
biggest planet



JUPITER



GoogleSlidesThemes.com

TRIAL TIMELINE

RESEARCH

STEP 1

Venus has a beautiful name, but it's terribly hot

CONCLUSIONS

STEP 5

Neptune is the fourth-largest planet in our Solar System

EXPERIMENTA

TION

STEP 2

Mercury is the closest planet to the Sun

PRECLINICAL

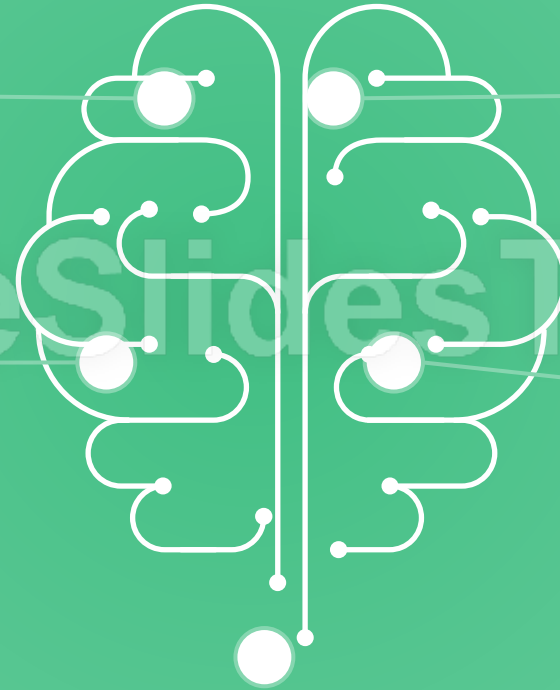
STEP 3

Despite being red, Mars is a cold place, not hot

RESULTS

STEP 4

The Sun is the star at the center of the Solar System



GoogleSlidesThemes.com

METHODOLOGY

People with
common
habits

20 - 80
participants



SAMPLE

5%

Confirmation rate

6

MONTHS

Experimentation
time

GOAL

Study the connection
between habits and
the disease

RESULTS

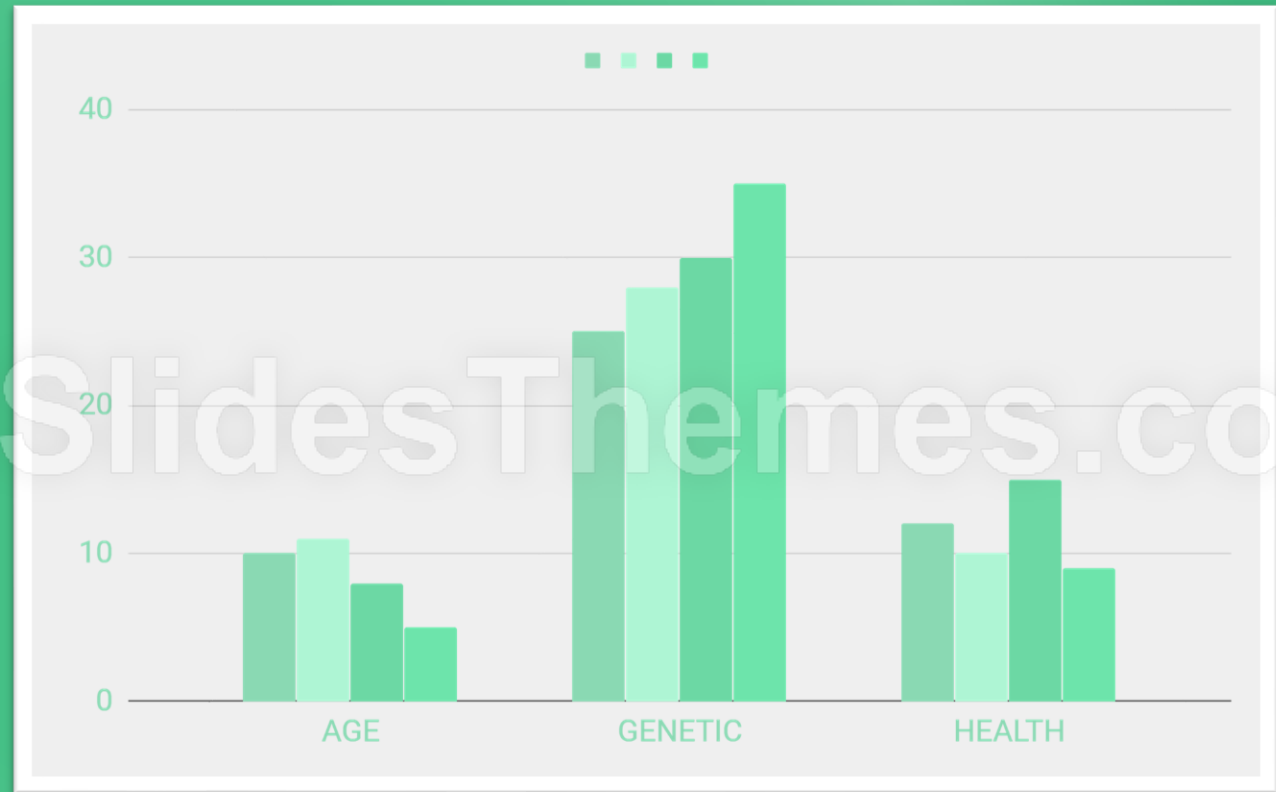
Venus has a beautiful name and is the second planet from the Sun. It's terribly hot—even hotter than Mercury—and its atmosphere is extremely poisonous

POSSIBLE CAUSES

Venus has a beautiful name and is the second planet from the Sun. It's terribly hot—even hotter than Mercury—and its atmosphere is extremely poisonous

TENDENCY

Mercury is the closest planet to the Sun and the smallest one in the Solar System—it's only a bit larger than our Moon. The planet's name has nothing to do with the liquid metal since it was named after the Roman messenger god, Mercury



IF YOU WANT TO MODIFY THESE GRAPHS, CLICK ON THEM, FOLLOW THE LINK, CHANGE THE DATA AND REPLACE THEM

RESULTS

EXPERIMENT A

OUTCOME			
TREATMENT	Test 1	Test 2	Test 3
Group 1	315	285	600
Group 2	210	390	600
Group 3	240	165	580

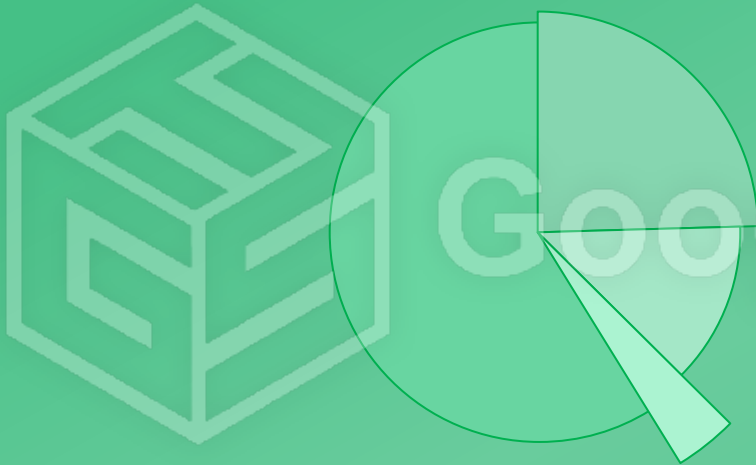
EXPERIMENT B

OUTCOME			
TREATMENT	Test 1	Test 2	Test 3
Group 1	315	285	600
Group 2	210	390	600
Group 3	240	165	580

RESULTS ANALYSIS

NEPTUNE

E



6%



24%

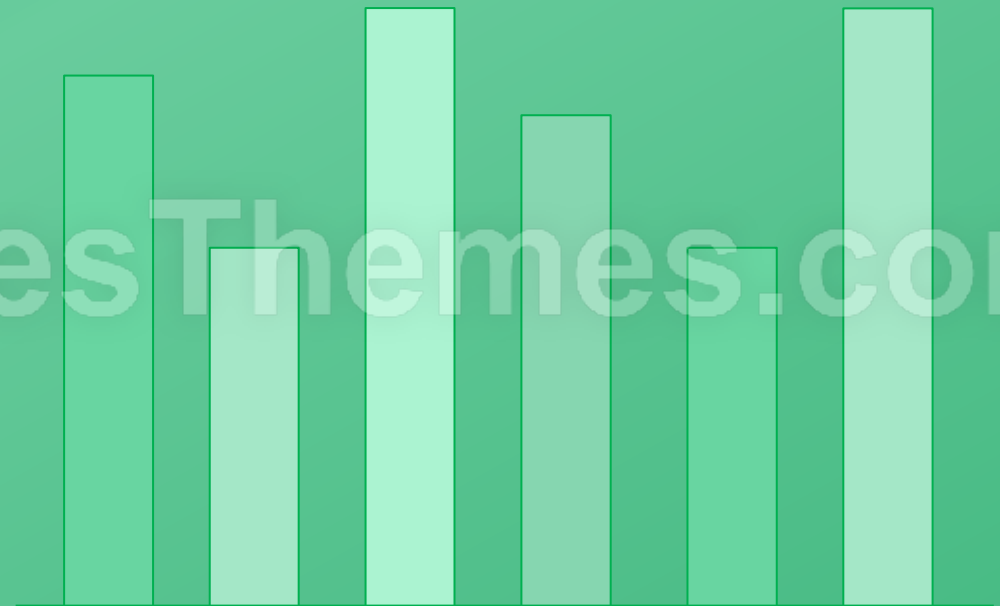


57%



13%

SATURN



12%



23%



42%



64%



64%



64%



45%

GENETIC
HERITABILITY



1-5%

CASES WHERE
GENETIC
DIFFERENCES
WERE
IDENTIFIED



CONCLUSIONS

Mercury is the closest planet to the Sun and the smallest one in the Solar System—it's only a bit larger than our Moon. The planet's name has nothing to do with the liquid metal since it was named after the Roman messenger god, Mercury

Google Slides Themes.com



THANKS

Design by

<https://www.fiverr.com/users/shaikhzainwork>



GoogleSlidesThemes.com