



T H I S I S

F I T N E S S

C O A C H

GoogleSlidesThemes.com



YOU CAN WRITE HERE

Add your title here

A company is an association or collection of individuals, whether natural persons, legal persons, or a mixture of both. Company members share a common purpose and unite in order to focus their various talents and organize their collectively available skills or resources to achieve specific, declared goals.

A company is an association or collection of individuals, whether natural persons, legal persons, or a mixture of both. Company members share a common purpose and unite in order to focus their various talents and organize their collectively available skills or resources to achieve specific, declared goals.

LEARN MORE





YOUR TITLE HERE

A company is an association or collection of individuals, whether natural persons, legal persons, or

a



YOUR TITLE HERE

A company is an association or collection of individuals, whether natural persons, legal persons, or

a



YOUR TITLE HERE

A company is an association or collection of individuals, whether natural persons, legal persons, or

a



YOUR TITLE HERE

A company is an association or collection of individuals, whether natural persons, legal persons, or

a

GoogleSlidesThemes.com



YOU CAN WRITE HERE

ANOTHER TITLE

A company is an association or collection of individuals, whether natural persons, legal persons, or a mixture of both. Company members share a common purpose and unite in order to focus their various talents and organize their collectively available skills or resources to achieve specific, declared goals. A company or association of persons can be created at law as legal person so that the company in itself can accept Limited liability for civil responsibility and taxation incurred as members perform (or fail) to discharge their duty within the publicly declared "birth certificate" or published policy. Because companies are legal persons, they also may associate and register themselves as companies – often known as a corporate group.

YOU CAN WRITE HERE

YOU CAN WRITE A GREAT TITLE

A company is an association or collection of individuals, whether natural persons, legal persons, or a

YOU CAN WRITE HERE

TEXT WITH IMAGE BACKGROUND

A company is an association or collection of individuals, whether natural persons, legal persons, or a mixture of both. Company members share a common purpose and unite in order to focus their various talents and organize their

A company is an association or collection of individuals, whether natural persons, legal persons, or a mixture of both. Company members share a common purpose and unite in order to focus their various talents and organize their

GoogleSlidesThemes.com



YOUR TITLE HERE

A company is an association or collection of individuals, whether natural persons, legal persons, or a



YOUR TITLE HERE

A company is an association or collection of individuals, whether natural persons, legal persons, or a



YOUR TITLE HERE

A company is an association or collection of individuals, whether natural persons, legal persons, or a



YOUR TITLE HERE

A company is an association or collection of individuals, whether natural persons, legal persons, or a



YOUR TITLE HERE

A company is an association or collection of individuals, whether natural persons, legal persons, or a



YOUR TITLE HERE

A company is an association or collection of individuals, whether natural persons, legal persons, or a



GoogleSlidesThemes.com



GoogleSlidesThemes.com



YOUR TITLE HERE

A company is an association or collection of individuals, whether natural persons, legal persons, or a



YOUR TITLE HERE

A company is an association or collection of individuals, whether natural persons, legal persons, or a



YOUR TITLE HERE

A company is an association or collection of individuals, whether natural persons, legal persons, or a

YOU CAN WRITE HERE

A FULL WIDTH TEXT

A company is an association or collection of individuals, whether natural persons, legal persons, or a mixture of both. Company members share a common purpose and unite in order to focus their various talents and organize their collectively available skills or resources to achieve specific, declared goals. A company or association of persons can be created at law as legal person so that the company in itself can accept Limited liability for civil responsibility and taxation incurred as members perform (or fail) to discharge their duty within the publicly declared "birth certificate" or published policy. Because companies are legal persons, they also may associate and register themselves as companies – often known as a corporate group. When the company closes it may need a "death certificate" to avoid further legal obligations

A company or association of persons can be created at law as legal person so that the company in itself can accept Limited liability for civil responsibility and taxation incurred as members perform (or fail) to discharge their duty within the publicly declared "birth certificate" or published policy. A company or association of persons can be created at law as legal person so that the company in itself can accept Limited liability for civil responsibility and taxation incurred as members perform (or fail) to discharge their duty within the publicly declared "birth certificate" or published policy. A company or association of persons can be created at law as legal person so that the company in itself can accept Limited liability for civil responsibility and taxation incurred as members perform (or fail) to discharge their duty within the publicly declared "birth certificate" or published policy.

YOU CAN WRITE HERE

TWO COLUMNS TEXT

A company is an association or collection of individuals, whether natural persons, legal persons, or a mixture of both. Company members share a common purpose and unite in order to focus their various talents and organize their collectively available skills or resources to achieve specific, declared goals. A company or association of persons can be created at law as legal person so that the company in itself can accept Limited liability for civil responsibility and taxation incurred as members perform (or fail) to discharge their duty within the publicly declared "birth certificate" or published policy. Because companies are legal persons, they also may associate and register themselves as companies – often known as a corporate group. When the company closes it may need a "death certificate" to avoid further legal.

A company or association of persons can be created at law as legal person so that the company in itself can accept Limited liability for civil responsibility and taxation incurred as members perform (or fail) to discharge their duty within the publicly declared "birth certificate" or published policy. A company or association of persons can be created at law as legal person so that the company in itself can accept Limited liability for civil responsibility and taxation incurred as members perform (or fail) to discharge their duty within the publicly declared "birth certificate" or published policy. A company or association of persons can be

WRITE HERE
SOMETHING
ABOUT

Entrepreneurial activities differ substantially depending on the type of organization and creativity. Entrepreneurial activities differ substantially depending on the type of organization and creativity.

Entrepreneurial activities differ substantially depending on the type of organization and creativity. Entrepreneurial activities differ substantially depending on the type of organization and creativity.

WRITE HERE
SOMETHING
ABOUT

Entrepreneurial activities differ substantially depending on the type of organization and creativity. Entrepreneurial activities differ substantially depending on the type of organization and creativity.

Entrepreneurial activities differ substantially depending on the type of organization and creativity. Entrepreneurial activities differ substantially depending on the type of organization and creativity.

Entrepreneurial activities differ substantially depending on the type of organization and creativity. Entrepreneurial activities differ substantially depending on the type of organization and creativity. Entrepreneurial activities differ substantially depending on the type of organization and creativity. Entrepreneurial activities differ substantially depending on the type of organization and creativity.

Y O U C A N W R I T E H E R E

THREE COLUMNS TEXT

A company is an association or collection of individuals, whether natural persons, legal persons, or a mixture of both. Company members share a common purpose and unite in order to focus their various talents and organize their collectively available skills or resources to achieve specific, declared goals. A company or association of persons can be created at law as legal person so that the company in itself can accept Limited liability for civil responsibility and taxation incurred as members perform (or fail) to discharge their duty within the publicly declared "birth certificate" or published policy. Because companies are legal persons, they also may associate and register themselves as companies – often known as a corporate group. When the company closes it may need a "death certificate" to avoid further legal.

A company is an association or collection of individuals, whether natural persons, legal persons, or a mixture of both. Company members share a common purpose and unite in order to focus their various talents and organize their collectively available skills or resources to achieve specific, declared goals. A company or association of persons can be created at law as legal person so that the company in itself can accept Limited liability for civil responsibility and taxation incurred as members perform (or fail) to discharge their duty within the publicly declared "birth certificate" or published policy. Because companies are legal persons, they also may associate and register themselves as companies – often known as a corporate group. When the company closes it may need a "death certificate" to avoid further legal.

A company is an association or collection of individuals, whether natural persons, legal persons, or a mixture of both. Company members share a common purpose and unite in order to focus their various talents and organize their collectively available skills or resources to achieve specific, declared goals. A company or association of persons can be created at law as legal person so that the company in itself can accept Limited liability for civil responsibility and taxation incurred as members perform (or fail) to

YOU CAN WRITE HERE

TWO IMAGES + TEXT

A company is an association or collection of individuals, whether natural persons, legal persons, or a mixture of both. Company members share a common purpose and unite in order to focus their various talents and organize their collectively available skills or resources to achieve specific, declared goals.

LEARN MORE

GoogleSlidesThemes.com



YOUR TITLE GOES HERE

Entrepreneurial activities differ substantially depending on the type of organization





YOUR TITLE HERE

A company is an association or collection of individuals, whether natural persons, legal persons, or

YOUR TITLE HERE

A company is an association or collection of individuals, whether natural persons, legal persons, or

YOUR TITLE HERE

A company is an association or collection of individuals, whether natural persons, legal persons, or a

YOUR TITLE HERE

A company is an association or collection of individuals, whether natural persons, legal persons, or



GoogleSlidesThemes.com

YOU CAN WRITE HERE

YOUR TITLE
GOES HERE

Entrepreneurial activities differ substantially depending on the type of organization

YOU CAN WRITE HERE

YOUR TITLE
GOES HERE

Entrepreneurial activities differ substantially depending on the type of organization

YOU CAN WRITE HERE

YOUR TITLE GOES HERE

Entrepreneurial activities differ substantially depending on the type of organization

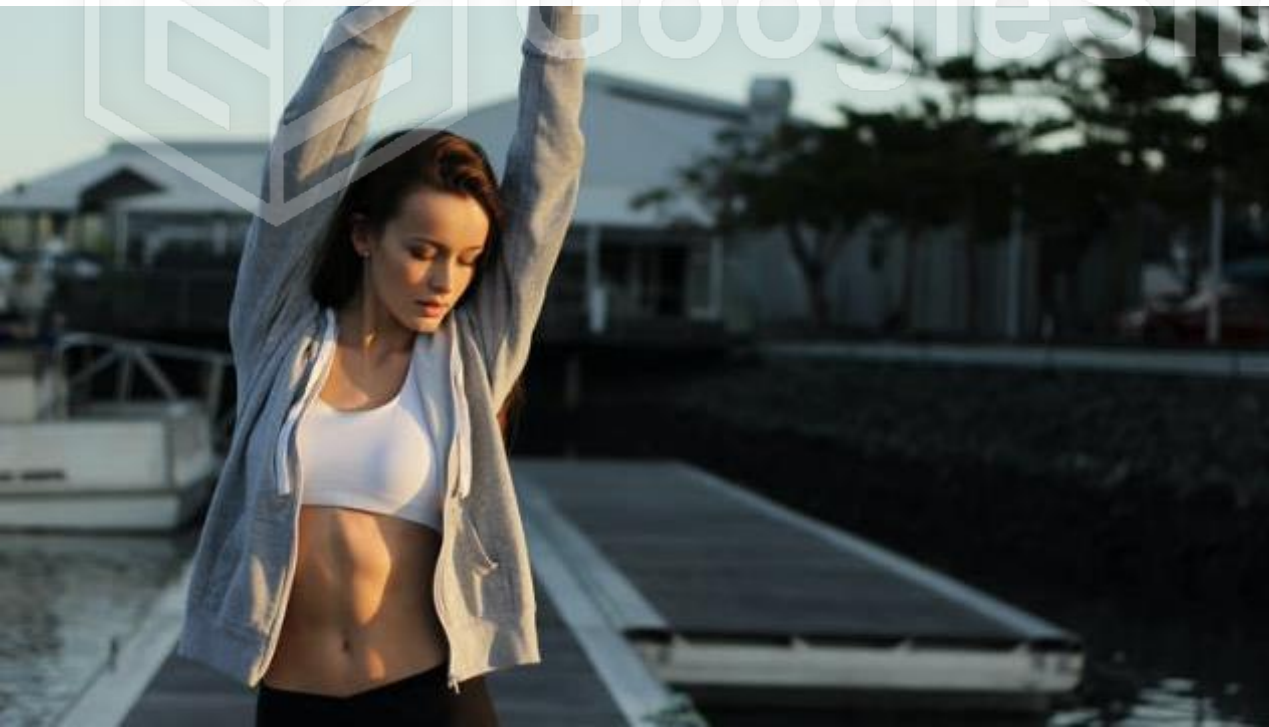
YOU CAN WRITE HERE

YOUR TITLE GOES HERE

Entrepreneurial activities differ substantially depending on the type of organization



GoogleSlidesThemes.com





YOU CAN WRITE HERE

YOUR TITLE GOES HERE

Entrepreneurial activities differ substantially depending on the type of organization

GoogleSlidesThemes.com

YOU CAN WRITE HERE

YOUR TITLE GOES HERE

Entrepreneurial activities differ substantially depending on the type of organization

YOU CAN WRITE HERE

YOUR TITLE GOES HERE

Entrepreneurial activities differ
substantially depending on the type of
organization



GoogleSlidesThemes.com

YOU CAN WRITE HERE

YOUR TITLE GOES HERE

Entrepreneurial activities differ
substantially depending on the type of
organization





YOU CAN WRITE HERE

SERVICES

SERVICE NAME

A company is an association or collection of individuals, whether natural persons, legal

[MORE](#)

SERVICE NAME

A company is an association or collection of individuals, whether natural persons, legal

[MORE](#)

SERVICE NAME

A company is an association or collection of individuals, whether natural persons, legal

[MORE](#)

Google Slides Themes.com



YOU CAN WRITE HERE

SERVICES

SERVICE NAME

A company is an association or collection of individuals, whether natural persons, legal

MORE

SERVICE NAME

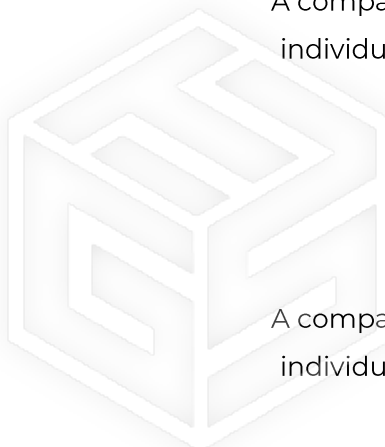
A company is an association or collection of individuals, whether natural persons, legal

MORE

SERVICE NAME

A company is an association or collection of individuals, whether natural persons, legal

MORE



GoogleSlidesThemes.com



GoogleSlidesThemes.com

YOU CAN WRITE HERE

OUR LATEST PROJECTS IN NUMBERS

A company is an association or collection of individuals, whether natural persons, legal persons, or a mixture of both. Company members share a common purpose and unite in order to focus.

97

CLIENTS

A company is an association
or collection of individuals,

104

PROJECTS

A company is an association
or collection of individuals,

58

APPS

A company is an association
or collection of individuals,

12

WEBSITES

A company is an association
or collection of individuals,

YOU CAN WRITE HERE

PHOTO GALLERY



WRITE HERE

A company is an association or collection of individuals, whether natural persons, legal persons.



WRITE HERE

A company is an association or collection of individuals, whether natural persons, legal





BREAK SECTION

LEARN MORE



Google Slides Themes.com

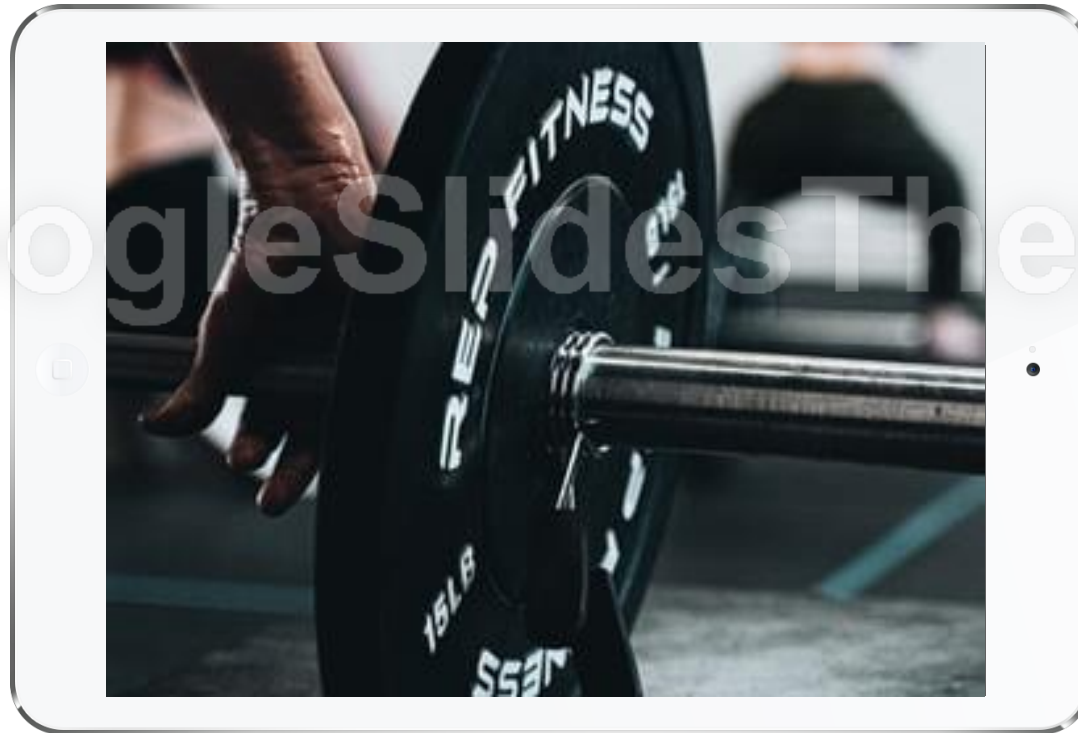
YOU CAN WRITE HERE

TABLET APP PROJECT

A company is an association or collection of individuals, whether natural persons, legal persons, or a mixture of both. Company members share a common purpose and unite in order to focus.

ELEMENT C

A company is an association or collection of individuals, whether natural persons.



ELEMENT C

A company is an association or collection of individuals, whether natural persons.

ELEMENT D

A company is an association or collection of individuals, whether natural persons.



ELEMENT D

A company is an association or collection of individuals, whether natural persons.

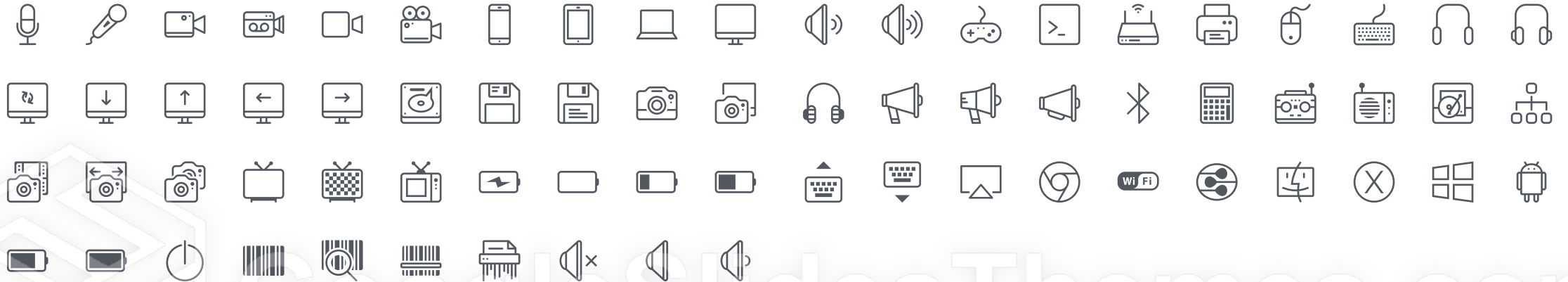


THANK
YOU!

GoogleSlidesThemes.com



Electronics



Miscellaneous



E-Commerce



Web

