



# HOTEL BALI

HOTEL POWERPOINT TEMPLATE

GoogleSlidesThemes.com

# Add your title here

Most designers set their type arbitrarily, either by pulling values out of the sky or by adhering to a baseline grid. The former case isn't worth discussing here, but the latter requires a closer look sky or by adhering to a baseline grid. The former case isn't worth discussing here.



Most designers set their type arbitrarily, either by pulling values out of the sky or by adhering to a baseline grid. The former case isn't worth discussing here, but the latter requires a closer look sky or by adhering to a baseline grid. The former case isn't worth discussing here.

# Add your title here

Most designers set their type arbitrarily, either by pulling values out of the sky or by adhering to a baseline grid. The former case isn't worth discussing here, but the latter requires a closer look sky or by adhering to a baseline grid. The former case isn't worth discussing here.

Google Slides Themes.com





# ADD YOUR TITLE HERE

Most designers set their type arbitrarily, either by pulling values out of the sky or by adhering to a baseline grid. The former case isn't worth discussing here, but the latter requires a closer look sky or by adhering to a baseline grid. The former case isn't worth discussing here.

Most designers set their type arbitrarily, either by pulling values out of the sky or by adhering to a baseline.


Most designers set their type arbitrarily, either by pulling values out of the sky or by adhering to a baseline.

Most designers set their type arbitrarily, either by pulling values out of the sky or by adhering to a baseline.



# ADD YOUR TITLE HERE

Most designers set their type arbitrarily, either by pulling values out of the sky or by adhering to a baseline grid. The former case isn't worth discussing here, but the latter requires a closer look sky or by adhering to a baseline grid. The former case isn't worth discussing here.



ADD  
YOUR  
TITLE

Most designers set their type arbitrarily, either by pulling values out of the sky or by adhering to a baseline.

Most designers set their type arbitrarily, either by pulling values out of the sky or by adhering to a baseline.

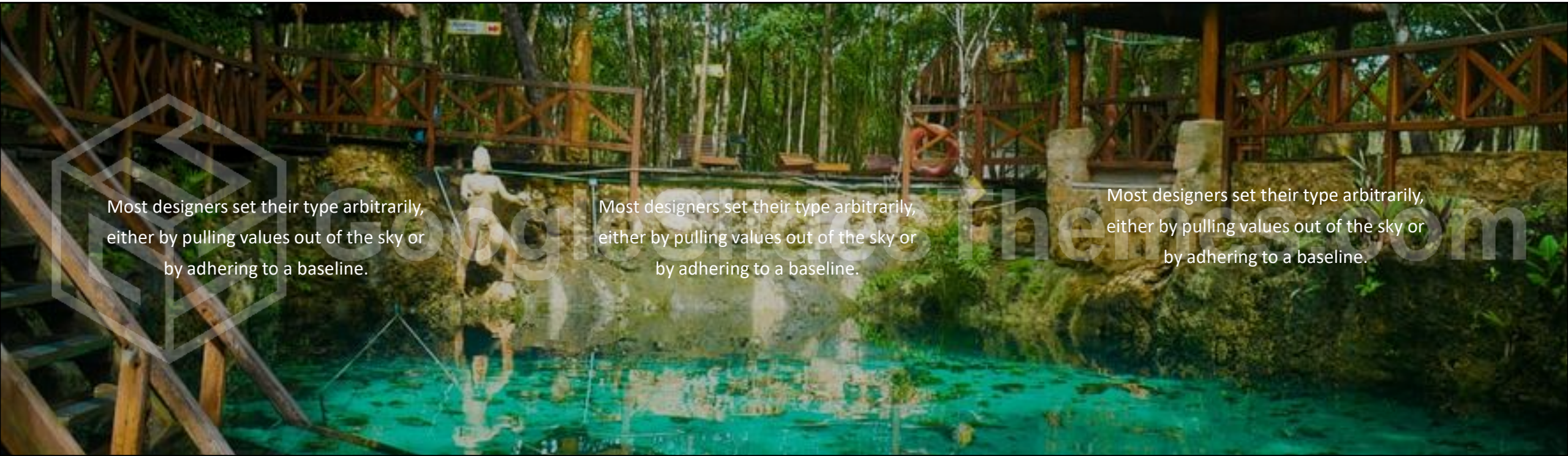
Most designers set their type arbitrarily, either by pulling values out of the sky or by adhering to a baseline.

Most designers set their type arbitrarily, either by pulling values out of the sky or by adhering to a baseline.

Most designers set their type arbitrarily, either by pulling values out of the sky or by adhering to a baseline.

Most designers set their type arbitrarily, either by pulling values out of the sky or by adhering to a baseline.

# ADD YOUR TITLE HERE



Most designers set their type arbitrarily, either by pulling values out of the sky or by adhering to a baseline.

Most designers set their type arbitrarily, either by pulling values out of the sky or by adhering to a baseline.

Most designers set their type arbitrarily, either by pulling values out of the sky or by adhering to a baseline.

Most designers set their type arbitrarily, either by pulling values out of the sky or by adhering to a baseline grid. The former case isn't worth discussing here, but the latter requires a closer look sky or by adhering to a baseline grid. The former case isn't worth discussing here.

Most designers set their type arbitrarily, either by pulling values out of the sky or by adhering to a baseline.

Most designers set their type arbitrarily, either by pulling values out of the sky or by adhering to a baseline.

Most designers set their type arbitrarily, either by pulling values out of the sky or by adhering to a baseline.

Most designers set their type arbitrarily, either by pulling values out of the sky or by adhering to a baseline.

Most designers set their type arbitrarily, either by pulling values out of the sky or by adhering to a baseline.

Most designers set their type arbitrarily, either by pulling values out of the sky or by adhering to a baseline.

Most designers set their type arbitrarily, either by pulling values out of the sky or by adhering to a baseline.

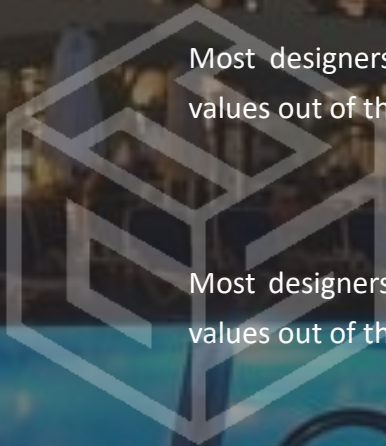
Most designers set their type arbitrarily, either by pulling values out of the sky or by adhering to a baseline.

Most designers set their type arbitrarily, either by pulling values out of the sky or by adhering to a baseline.

Most designers set their type arbitrarily, either by pulling values out of the sky or by adhering to a baseline.

Most designers set their type arbitrarily, either by pulling values out of the sky or by adhering to a baseline.

Most designers set their type arbitrarily, either by pulling values out of the sky or by adhering to a baseline.



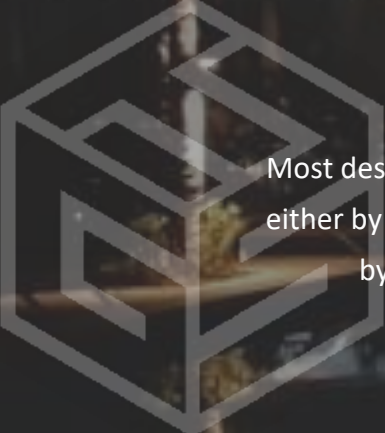
GoogleSlidesThemes.com

# ADD YOUR TITLE HERE

Most designers set their type arbitrarily, either by pulling values out of the sky or by adhering to a baseline grid. The former case isn't worth discussing here, but the latter requires a closer look sky or by adhering to a baseline grid. The former case isn't worth discussing here.



# ADD YOUR TITLE HERE



Most designers set their type arbitrarily,  
either by pulling values out of the sky or  
by adhering to a baseline.

Most designers set their type arbitrarily,  
either by pulling values out of the sky or  
by adhering to a baseline.

Most designers set their type arbitrarily,  
either by pulling values out of the sky or  
by adhering to a baseline.

GoogleSlidesThemes.com



# BRUSH PLACEHOLDER

Most designers set their type arbitrarily, either by pulling values out of the sky or by adhering to a baseline grid. The former case isn't worth discussing here, but the latter requires a closer look sky or by adhering to a baseline grid. The former case isn't worth discussing here.



# CUSTOM IMAGE

Most designers set their type arbitrarily, either by pulling values out of the sky or by adhering to a baseline grid. The former case isn't worth discussing here, but the latter requires a closer look sky or by adhering to a baseline grid. The former case isn't worth discussing here.

# CUSTOM IMAGE

Most designers set their type arbitrarily, either by pulling values out of the sky or by adhering to a baseline grid. The former case isn't worth discussing here, but the latter requires a closer look sky or by adhering to a baseline grid. The former case isn't worth discussing here.



SlidesThemes.com



# CUSTOM IMAGE

Most designers set their type arbitrarily, either by pulling values out of the sky or by adhering to a baseline grid. The former case isn't worth discussing here, but the latter requires a closer look sky or by adhering to a baseline grid. The former case isn't worth discussing here.



# CUSTOM IMAGE

Most designers set their type arbitrarily, either by pulling values out of the sky or by adhering to a baseline grid. The former case isn't worth discussing here, but the latter requires a closer look sky or by adhering to a baseline grid. The former case isn't worth discussing here.

Most designers set their type arbitrarily, either by pulling values out of the sky or by adhering to a baseline grid. The former case isn't worth discussing here, but the latter requires a closer look sky or by adhering to a baseline grid. The former case isn't worth discussing here.



Most designers set their type arbitrarily, either by pulling values out of the sky or by adhering to a baseline grid. The former case isn't worth discussing here, but the latter requires a closer look sky or by adhering to a baseline grid. The former case isn't worth discussing here.





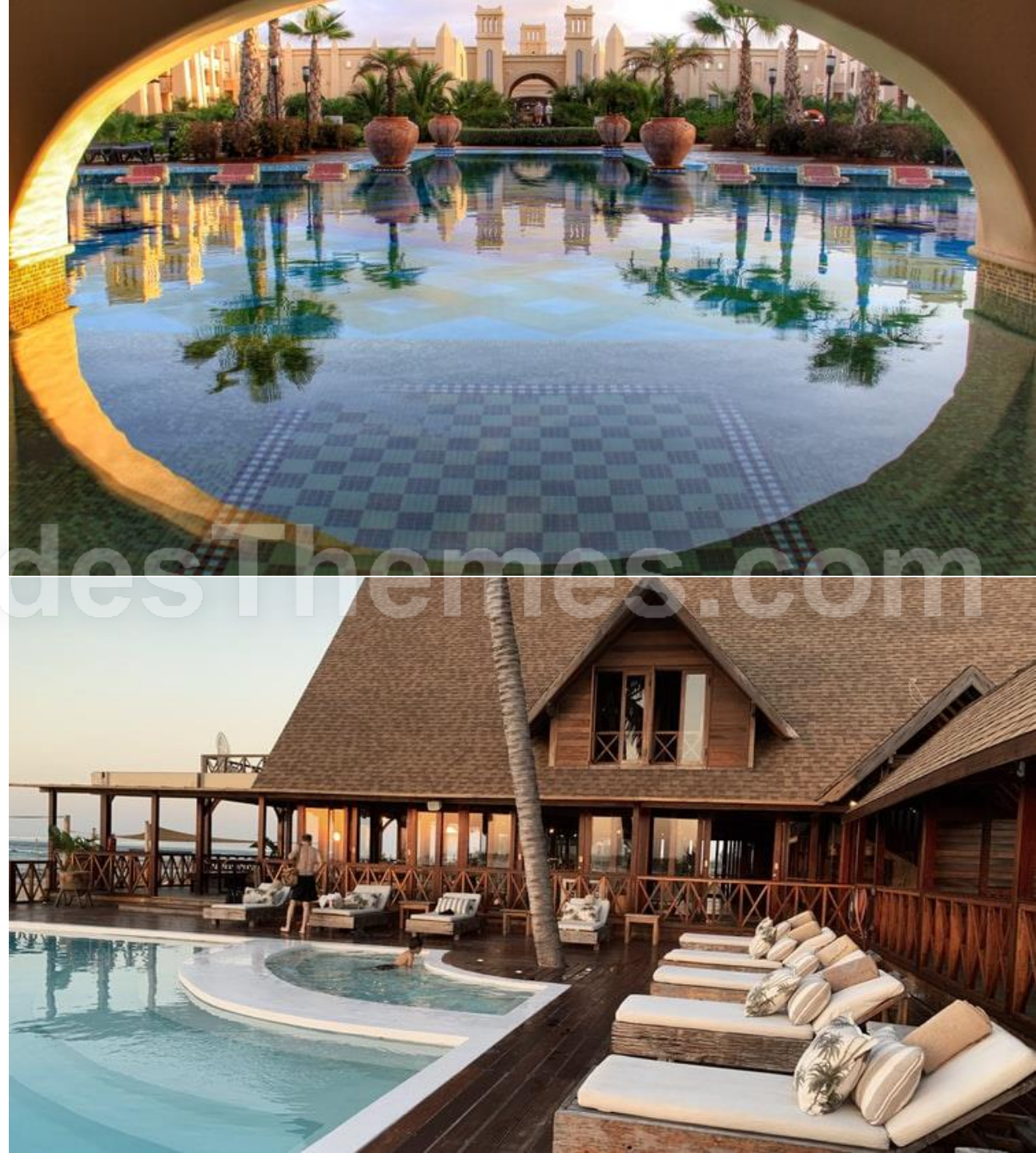
Most designers set their type arbitrarily, either by pulling values out of the sky or by adhering to a baseline grid. The former case isn't worth discussing here, but the latter requires a closer look sky or by adhering to a baseline grid. The former case isn't worth discussing here.

Most designers set their type arbitrarily, either by pulling values out of the sky or by adhering to a baseline grid. The former case isn't worth discussing here, but the latter requires a closer look sky or by adhering to a baseline grid. The former case isn't worth discussing here.

# IMAGE PLACE- HOLDER

Most designers set their type arbitrarily, either by pulling values out of the sky or by adhering to a baseline.

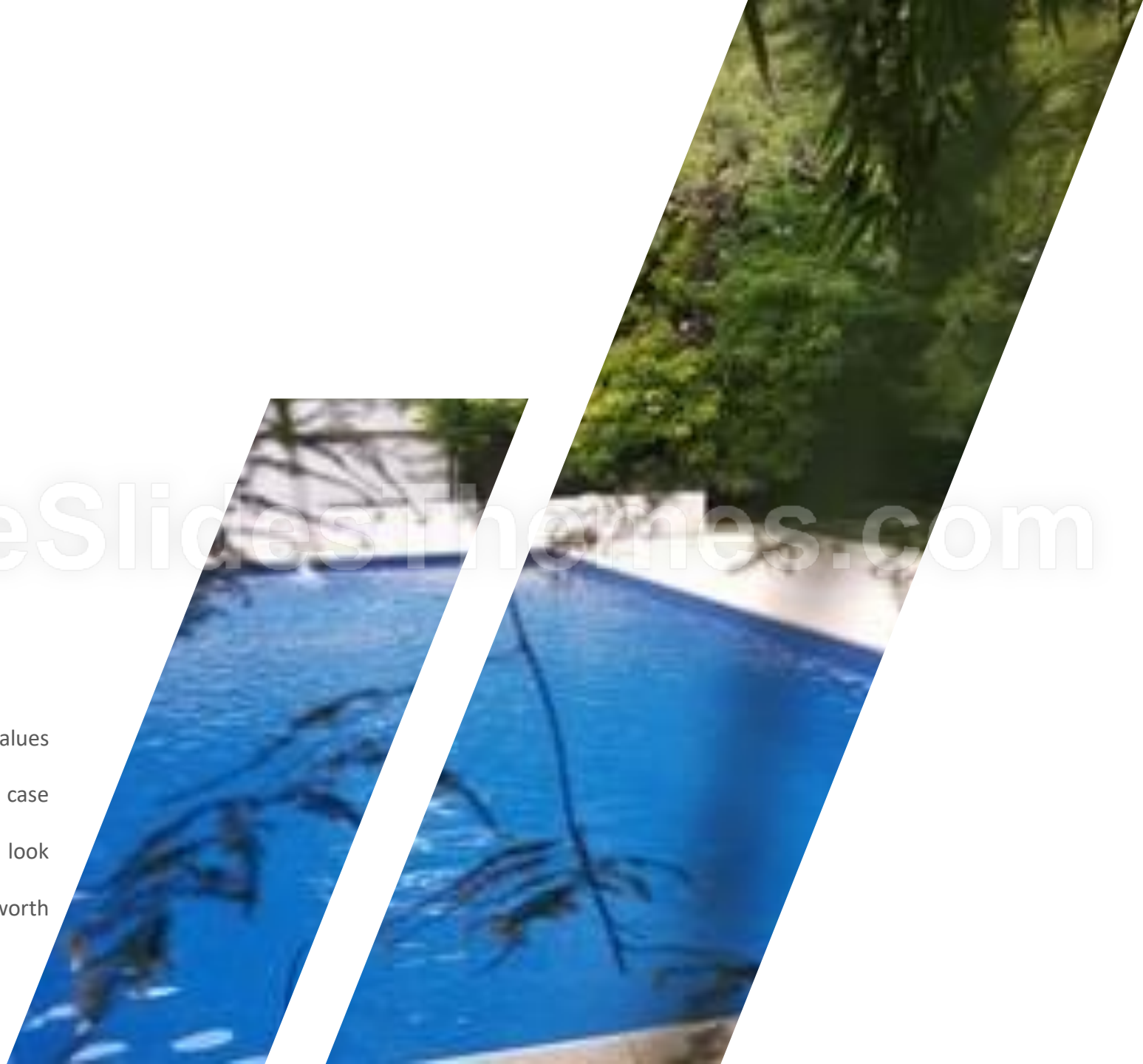
Most designers set their type arbitrarily, either by pulling values out of the sky or by adhering to a baseline.



# ADD YOUR TITLE

Most designers set their type arbitrarily, either by pulling values out of the sky or by adhering to a baseline grid. The former case isn't worth discussing here, but the latter requires a closer look sky or by adhering to a baseline grid. The former case isn't worth discussing here.

GoogleSlidesThemes.com





GoogleSlidesThemes.com

# IMAGE PLACE- HOLDER

## FOUR IMAGE LAYOUT

Most designers set their type arbitrarily, either by pulling values out of the sky or by adhering to a baseline grid. The former case isn't worth discussing here, but the latter requires a closer look sky or by adhering to a baseline grid. The former case isn't worth discussing here.



Most designers set their type arbitrarily, either by pulling values out of the sky or by adhering to a baseline.

Most designers set their type arbitrarily, either by pulling values out of the sky or by adhering to a baseline.

Most designers set their type arbitrarily, either by pulling values out of the sky or by adhering to a baseline.

Most designers set their type arbitrarily, either by pulling values out of the sky or by adhering to a baseline.

Most designers set their type arbitrarily, either by pulling values out of the sky or by adhering to a baseline.

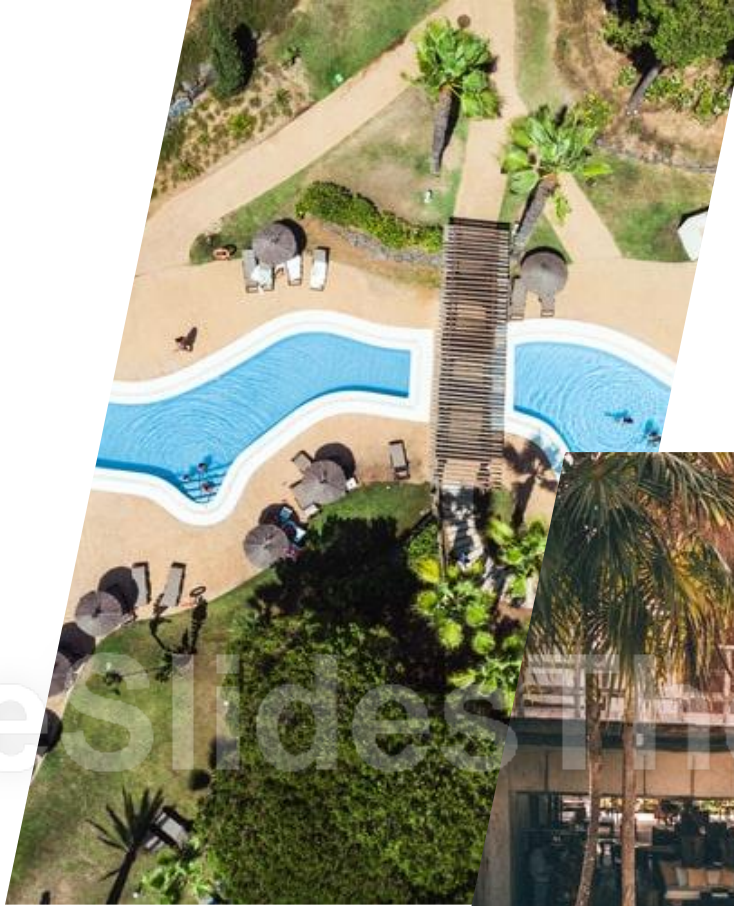
Most designers set their type arbitrarily, either by pulling values out of the sky or by adhering to a baseline.



Most designers set their type arbitrarily, either by pulling values out of the sky or by adhering to a baseline.

Most designers set their type arbitrarily, either by pulling values out of the sky or by adhering to a baseline.

Most designers set their type arbitrarily, either by pulling values out of the sky or by adhering to a baseline.





THANK YOU

Google Slides Themes.com